

What is Income Protection?



Income Protection provides a financial benefit if you are unable to work due to illness or injury.

It pays a percentage of your income whilst you are unable to work. Benefit payments begin after you have been off work for a defined period of time and can be paid for a fixed term or until State Pension age*.

Illnesses and injuries do happen: **3 times** as many people of working age suffered a long-term illness than died in 2014¹. Conversely, many of us get Life Insurance to protect our families financially against our death, while around **1 in 10 UK households have Income Protection**²: the only insurance that will continue to provide you with a percentage of your salary if you go on long-term sick leave.

*Terms and Conditions apply. Cover depends on the policy agreed between Unum and an employer.

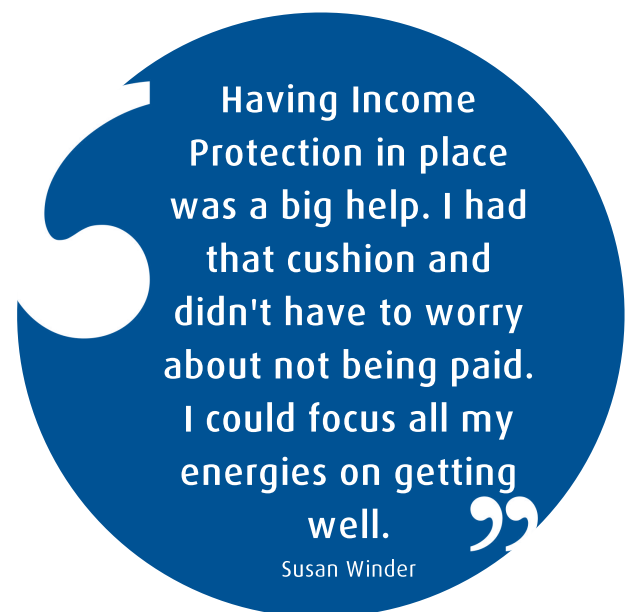
Susan's story

Susan had suffered with breathlessness and exhaustion for some time. As impact on her work and home life grew, she was referred to hospital where she was diagnosed with a hole in the heart.

As part of her company's Income Protection plan with Unum, she had access to an expert Vocational Rehabilitation Consultant (VRC). After Susan had her heart surgery her dedicated VRC, Beth, got in touch.

"She was a huge help because I could talk to her. While I knew I had to get back to work, Beth stressed that I had to do it in the correct way, rather than rushing back and making myself feel worse and failing."

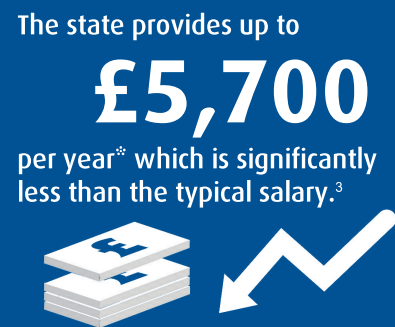
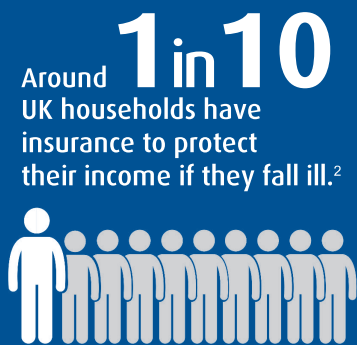
"Having Income Protection in place was also a big help. I had that cushion and didn't have to worry about not being paid. I've seen other people in my position and it takes them twice as long to get back, or they return too soon because they desperately need the money."



Why Income Protection is a good idea

Without income protection, if you are unable to work because of illness or injury, it is likely that your lifestyle will be significantly affected.

Most of us don't realise what would happen if we were to go on long-term sick leave. In fact, although many employers go further, they are only obliged to pay Statutory Sick Pay for 28 weeks. The State benefit that then kicks in only pays between £3,800 and £5,700 a year for most people³ - a maximum of around 20% of the average salary⁴. And worryingly, almost a quarter (24%) of UK households have no savings at all to fall back on².



“Having Income Protection in place was a huge help. I had that cushion and didn't have to worry about not being paid.”

Susan Winder

For more information
visit
unum.co.uk

*Employment and Support Allowance (ESA) rates for those placed in the Support Group.

Tax and welfare benefits can change.

Consider seeking further information from HMRC, Benefits Agency or another source such as the Citizens Advice Bureau.

Sources:

1. ONS weekly death figures, 2014; DWP Employment and Support Allowance: Outcomes of Work Capability Assessments, 2016
2. HSBC Opinion Matters Survey, 2015
3. www.gov.uk/employment-support-allowance/what-youll-get
4. ONS Annual Survey of Hours and Earnings, 2015

unum.co.uk

Unum Limited is authorised by the Prudential Regulation Authority and regulated by the Financial Conduct Authority and the Prudential Regulation Authority.

Registered Office and mailing address: Milton Court, Dorking, Surrey RH4 3LZ Registered in England 983768 Unum Limited is a member of the Unum Group of Companies.

We monitor telephone conversations and e-mail communications from time to time for the purposes of training and in the interests of continually improving the quality of service we provide.